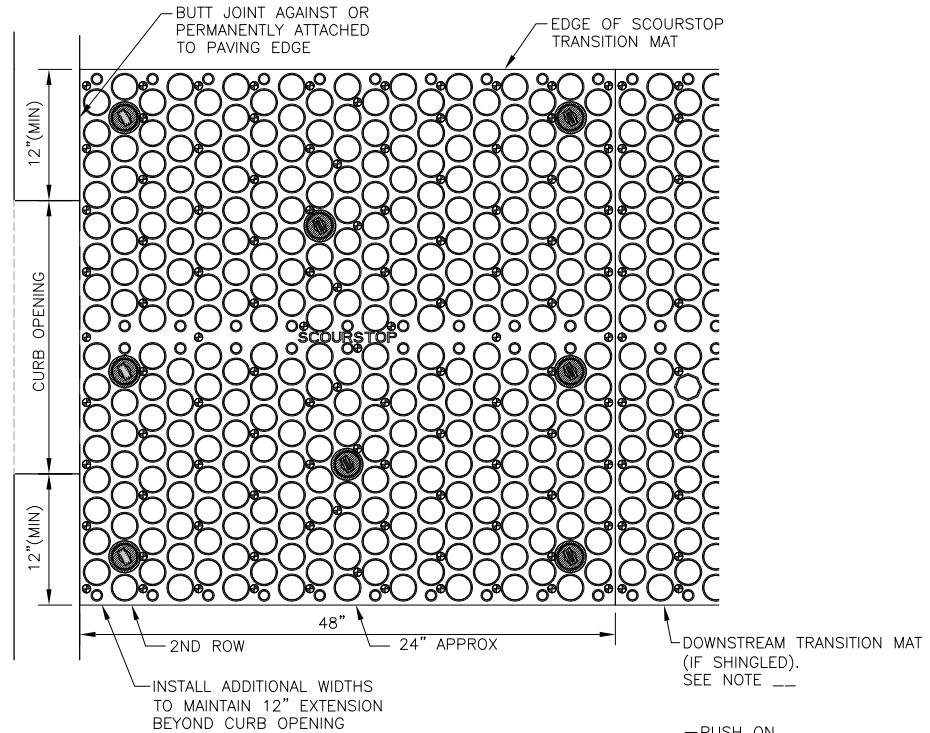


PREFERRED INSTALLATION SPECIFICATIONS

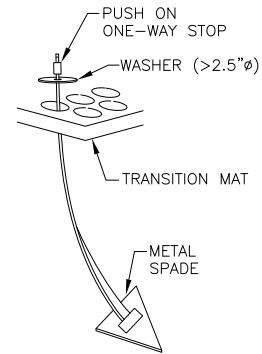
1. MINIMUM APPLICATION IS 4 FOOT LENGTH.
2. WHERE CONTRIBUTORY PAVED SURFACE EXCEEDS 20,000 SF, USE VOLUME FLOWS FROM TABLE TO DETERMINE THE LENGTH AND WIDTH OF TRANSITION MAT COVERAGE.
3. CONSTRUCT DOWNSTREAM CHANNEL AT LEAST TWICE THE WIDTH OF THE OUTLET. CONSTRUCT WIDTH AS FLAT AND LEVEL AS POSSIBLE FOR PROPER DRAINAGE (SEE DETAILS).
4. ON AREAS OF SLOPE TRANSITION, UTILIZE ANCHOR STRAPS TO MAINTAIN SOIL CONTACT ACROSS ENTIRE MAT LENGTH. STRAPS CAN BE USED TO PROVIDE UP TO 14" OF DEFLECTION AT CENTER OF MAT FROM ENDS.



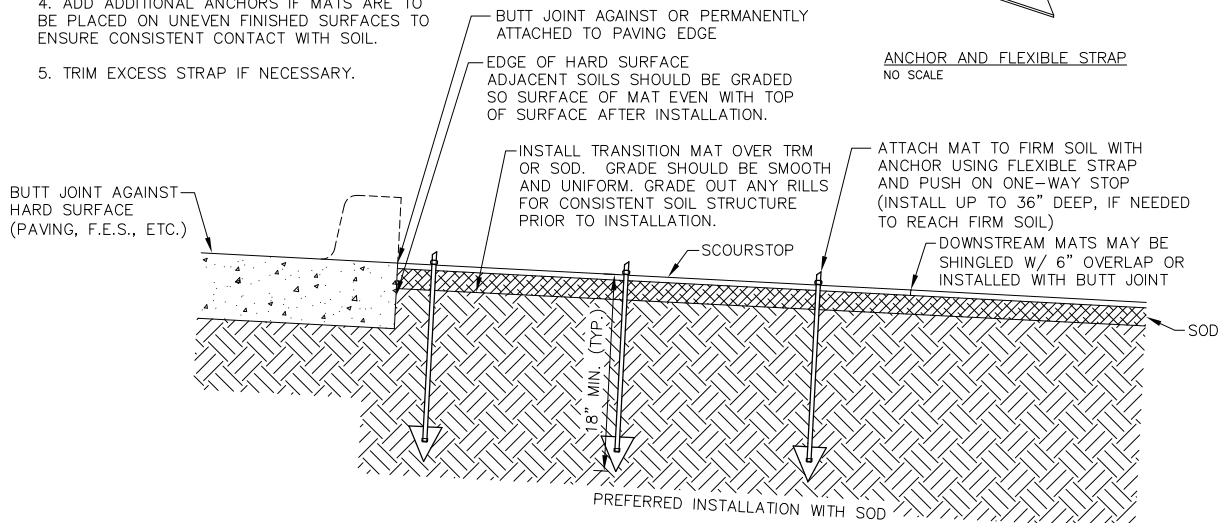
SCOURSTOP TRANSITION MAT
INSTALLATION DETAILS
SCALE 1" = 1'

ANCHOR INSTALLATION INSTRUCTIONS:

1. PUSH SPADE THROUGH SOIL WITH STAKE OR BY OTHER MEANS TO MINIMUM DEPTH OF 18". SPADE MUST BE INSTALLED INTO FIRM SOILS.
2. LOOP STRAP TROUGH SCOURSTOP MAT.
3. PULL STRAP TIGHT AND PUSH ON ONE-WAY STOP UNTIL SNUG.
4. ADD ADDITIONAL ANCHORS IF MATS ARE TO BE PLACED ON UNEVEN FINISHED SURFACES TO ENSURE CONSISTENT CONTACT WITH SOIL.
5. TRIM EXCESS STRAP IF NECESSARY.



ANCHOR AND FLEXIBLE STRAP
NO SCALE



SCOURSTOP TRANSITION MAT

CURB OPENING INSTALLATION DETAILS

NO SCALE